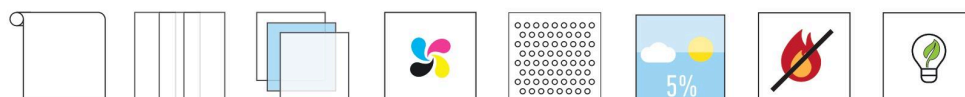


CARACTERÍSTICAS TÉCNICAS

Composición: 42% PVC 58% PES
 Factor de apertura: 1%
 Peso: 638 g/m² +- 5%
 Espesor: 0.78 mm+-5%
 Ancho tejido: 270CMS
 Mantenimiento: Con agua y jabón
 Resistencia al fuego: M1

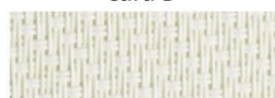
TECHNICAL CHARACTERISTICS

Composition: 42% PVC 58% PES
 Openness factor: 1%
 Weight: 638 g/m² +- 5%
 Thickness: 0.78 mm+-5%
 Fabric width: 270CMS
 Maintenance: Soap and water
 Fire retardant: M1



cara A

cara B



01- Sarga 1% 0202 blanco (270 cm)



02- Sarga 1% 0808 lino (270 cm)



03- Sarga 1% 0207 blanco perla (270 cm)

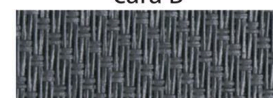


04- Sarga 1% 0707 perla (270 cm)

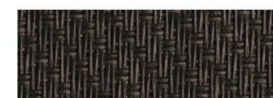
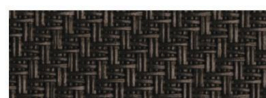


cara A

cara B



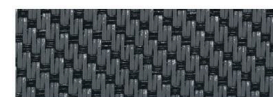
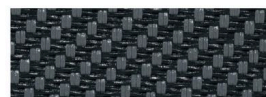
06- Sarga 1% 0101 gris (270 cm)



07- Sarga 1% 1111 bronce (270 cm)



08- Sarga 1% 1010 antracita (270 cm)



09- Sarga 1% 0110 gris antracita (270 cm)